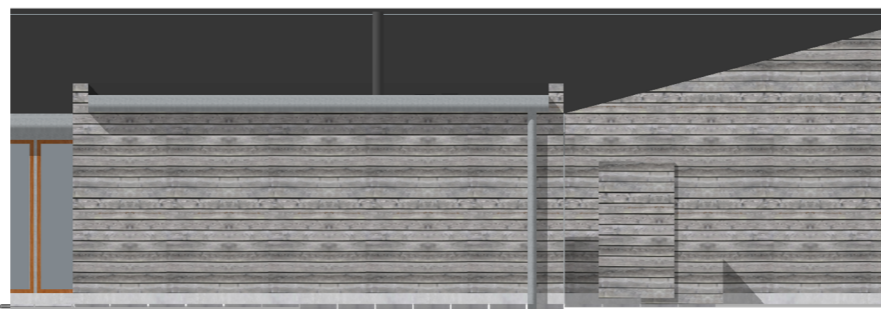




Facade mod nord, 1:100



Facade mod øst, 1:100



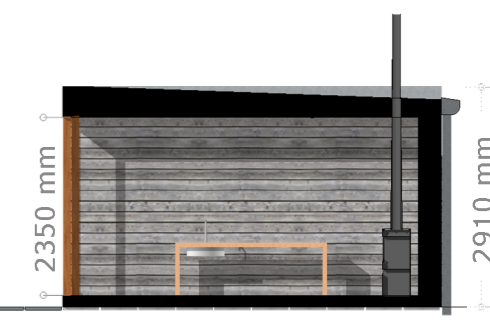
Facade mod syd, 1:100



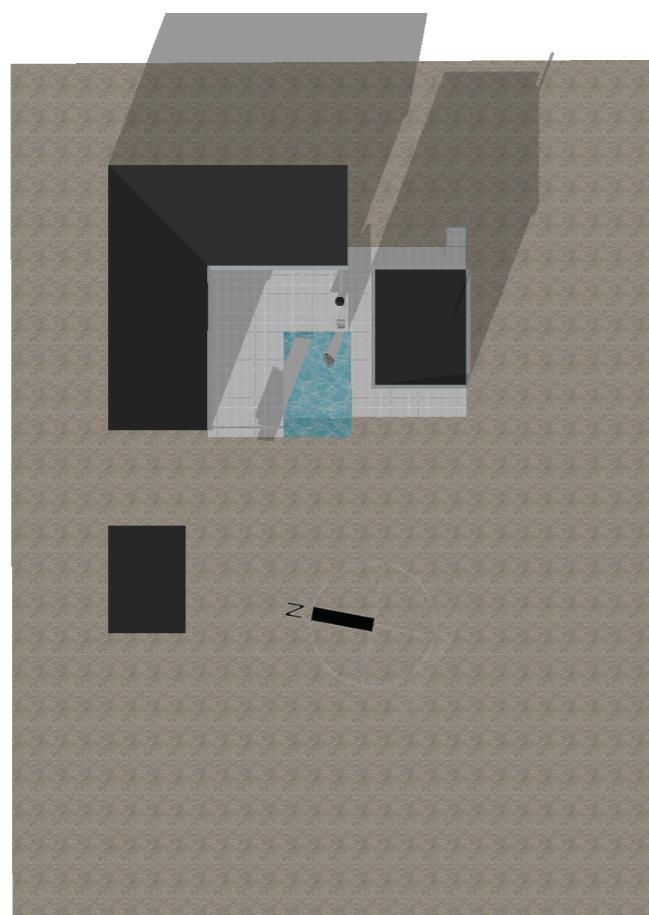
Facade mod vest, 1:100



|                               |                      |
|-------------------------------|----------------------|
| Eksist. hus (bygning 2)       | 113,0 m <sup>2</sup> |
| Grundareal                    | 1.509 m <sup>2</sup> |
| Bebyg.-procent                | 7,5 %                |
| <br>                          |                      |
| Eksisterende skur (bygning 1) | 14 m <sup>2</sup>    |
| Ny udestue                    | 33 m <sup>2</sup>    |
| Småbygninger i alt            | 47 m <sup>2</sup>    |

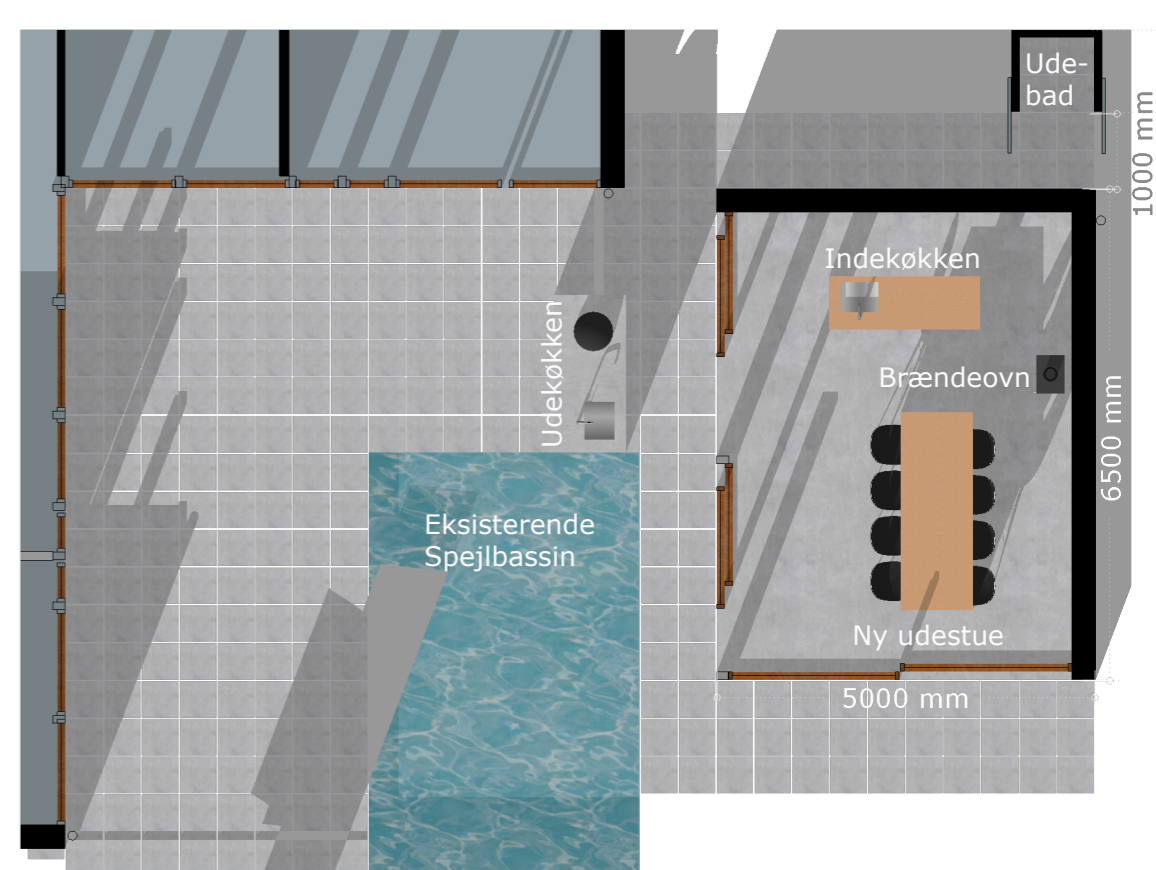


Snit, 1:100



Situationsplan. 1:400

Sleipnersvej



Plan 1:100